

Power Transformer		(Equipped with static shield, magnetic shield)			
Model	Specifications			Size Weight(Kg)	Applications
	Primary	Secondary			
PT-400B	100V	20V-0-280V-320V-360V-720mA AC (450mA DC; Bridge rectifier) 75V-0-75V-0.15A, 6.3V-4A(x2), 6.3V-2A(x2)		WE-114 (8.1)	KT88, EL34, EL156
PT-310B	100V	0-10V-160V-180V-800mA AC (500mA DC; Bridge rectifier) 280V-0.1A, 80V-0.1A, 6.3V-6.6A(x2), 6.3V-2.5A		PB-114 (5.9)	6C33C-B
PT-300B	100V	20V-0-280V-310V-350V-530mA AC (330mA DC; Bridge rectifier) 0-70V-0.12A, 6.3V-3.5A(x2), 6.3V-2.5A		PB-114 (5.9)	KT88, KT66, EL34, 6L6GC
PT-270	100V	320V-280V-0-60V-280V-320V-275mA AC (390mA DC; Full-wave rectifier) 0-2.5V-6.3V-5A(x2), 6.3V-2.5A, 5V-3A		PB-114 (5.8)	KT88, KT66, VT52, 6L6GC, EL34/6CA7 6550A, 6B4G, 12E1, 2A3, 6L6G/CV1947
PT-260	100V	480V-420V-240V-0-240V-420V-480V-170mA AC 0-6.3-7.5V-5A(x2), 6.3V-3A, 5V-3A ①Choke input, Full-wave rectifier: 250mA DC ②Capacitor input, Full-wave rectifier: 170mA DC		PB-114 (5.7)	①Single(stereo), Push pull(monoral) VT52, 6B4G, 6A3, KT66, 350B ②Single(stereo), Push pull(monoral) VT25, VT62, 50, 6L6GC, EL34
PT-250	100V	500V-380V-240V-0-240V-380V-500V-150mA AC (200mA DC; Full-wave rectifier) 7.5V-4.5A(x2), 6.3V-3A, 5V-3A		PB-114 (5.7)	10, VT25, VT25A, 801A, VT62, 50
PT-240	100V	480V-420V-240V-0-240V-420V-480V-170mA AC 0-2.5-5V-5.5A(x2), 6.3V-3A, 5V-3A ①Choke input, Full-wave rectifier: 250mA DC ②Capacitor input, Full-wave rectifier: 170mA DC		PB-114 (5.7)	①Single(stereo), Push pull(monoral) 2A3, 300B, 45, PX4, PX25 ②Single(stereo), Push pull(monoral) PX25A, DA30, 300B
PT-220	100V	380V-320V-0-100V-320V-380V-200mA AC (280mA DC; Full-wave rectifier) 0-4V-5V-3A(x2), 0-6.3V-10V-2.5A, 5V-3A		PB-114 (5.2)	300B, PX25, PX4,
PT-180	100V	280V-250V-0-60V-250V-280V-220mA AC (300mA DC; Full-wave rectifier) 6.3V-2.5A(x3), 5V-3A		PB-102 (4.3)	6V6, 6F6, 6L6GC, 6BM8, 6B4G 6BQ5, 7189A, R120, 42
New PT-165	100V	380V-280V-0-280V-380V-130mA AC (180mA DC; Full-wave rectifier) 0-6.3V-7.5V-2.2A(x2), 6.3V-2A, 5V-3A		PB-102 (3.9)	①Single(stereo) VT25, 300B, EL34, KT66, VT52, 6B4G ②Push pull(monoral) VT25, EL34(T), KT66(T), VT52, 6B4G
PT-160	100V	320V-280V-0-280V-320V-140mA AC (190mA DC; Full-wave rectifier) 0-2.5V-6.3V-3A(x2), 6.3V-2.5A, 5V-3A		PB-102 (3.9)	2A3, 6A3, PX4, VT52, E406N, 6AC5, 6B4G, KT66, 6BQ5, 6F6, 6V6, 6BM8, 71A, 42, 45, 46
PT-150	100V	280V-250V-220V-0-220V-250V-280V-160mA AC (220mA DC; Full-wave rectifier) 0-6.3V-2A(x3), 5V-3A		PB-102 (3.9)	6V6, 6F6, 6BM8, 6AC5, 42, 71A, 7189A 6BQ5, 6GW8, KT88, KT66, 6550A, EL34, VT52, 6B4G, 6L6GC, 12E1
PT-100	100V	280V-250V-0-250V-280V-100mA AC (140mA DC; Full-wave rectifier) 0-5V-6.3V-2A(x2), 0-6.3V-2A, 5V-2A		PB-95 (2.8)	6F6, 6BQ5, 6AC5, (For Stereo Preamp) 6BM8, 71A, 6V6, 42
PT-95	100V	230V-200V-0-200V-230V-120mA AC (170mA DC; Full-wave rectifier) 0-5V-6.3V-2A(x2), 0-6.3V-2A, 5V-2A		PB-95 (2.8)	WE101D, WE104D, 6K6GT, 41 (For Stereo Preamp) WE311A, WE349A, 6BM8, 71A
PT-60	100V	260V-0-260V-35mA AC (50mA DC; Full-wave rectifier) 0-15V-2A, 6.3V-1A		PB-78 (1.7)	For Stereo Preamp

Power transformers with American or European primary voltage are available upon request, please contact our authorized international dealers.

●Insulation Resistance : More than 100MΩ at DC500V
●Dielectric Withstanding : AC1500V, 1min.

Choke Coil		(Equipped with magnetic Shield)			
MODEL	Specifications				Size Weight (Kg)
	Inductance	Rated DC Current	max. DC Current	DC resistance	
C-60-50W	60H / 15H	50mA / 100mA	60mA / 120mA	840 / 210Ω	WE-66 (1.3)
C-16-150W	16H / 4H	150mA / 300mA	180mA / 360mA	200 / 50Ω	WE-85 (3.0)
C-10-200W	10H / 2.5H	200mA / 400mA	250mA / 500mA	140 / 35Ω	WE-85 (3.0)
C-10-130W	10H / 2.5H	130mA / 260mA	150mA / 300mA	160 / 40Ω	WE-66 (1.3)
C-30-80W	30H / 7.5H	80mA / 160mA	90mA / 180mA	440 / 110Ω	WE-66 (1.3)
C-6-250W	6H / 1.5H	250mA / 500mA	280mA / 560mA	88 / 22Ω	WE-85 (3.0)
C-30-40	30H	40mA	50mA	460Ω	CB-60 (0.7)
C-1-400	1H	400mA	450mA	18Ω	CB-66 (0.85)
☆ C-50-30	50H	30mA	40mA	1500Ω	WE-60 (0.85)
CC-10-200W	10H / 2.5H	200mA / 400mA	230mA / 450mA	150 / 37Ω	PH-78 (1.8)

☆ : Make On order, without rating plate

●Insulation Resistance : More than 100MΩ at DC500V ●Dielectric Withstanding : AC1500V, 1min.

Choke Coil (Choke input Circuit)		(Equipped with magnetic Shield)				
MODEL	Specifications					Size Weight (Kg)
	Inductance and DC Current	max. DC Current	DC resistance	max. AC input voltage	min. operating Current	
C-25-150CH	25H-150mA	200mA	205Ω	700V MAX	30mA MIN	WE-85 (2.4)
C-15-200CH	15H-200mA	240mA	130Ω	600V MAX	40mA MIN	WE-85 (2.4)

●Insulation Resistance : More than 100MΩ at DC500V ●Dielectric Withstanding : AC2.0KV, 1min.

Output Transformer				Push Pull (with SG tap)							
MODEL	Output (W)	Impedance		Frequency Response (± 1 dB)	Insertion Loss	Maximum DC Current		Primary Inductance		Size Weight (Kg)	Applications
		Primary	Secondary			Balance	Unbalance	Balance	Unbalance		
HW-100-5	100 30Hz	5k Ω	4, 8, 16 Ω	10 ~ 60kHz	0.15dB	300mA	5.5mA	200H	125H	WE-114 (6.2)	KT-88, EL-34, EL-156 6550A, 6L6GC, 300B
HW-60-5	60 30Hz	5k Ω	4, 8, 16 Ω	10 ~ 70kHz	0.2 dB	250mA	4.0mA	200H	125H	WE-102 (4.1)	KT-88, EL-34, 300B 6550A, 6L6GC
HW-40-10	40 45Hz	10k Ω	4, 8, 16 Ω	10 ~ 60kHz	0.2 dB	180mA	2.8mA	250H	150H	WE-85 (2.4)	6V6, VT-62/801A 6F6, VT-25/10, 42
HW-40-8	40 45Hz	8k Ω	4, 8, 16 Ω	10 ~ 60kHz	0.2 dB	200mA	3.5mA	200H	130H	WE-85 (2.4)	6L6GC, 6BQ5 6F6, 6V6, KT-66
HW-40-5	40 45Hz	5k Ω	4, 8, 16 Ω	10 ~ 60kHz	0.2 dB	250mA	4.0mA	150H	90H	WE-85 (2.4)	EL-34, 2A3, 6A3, 45 6L6GC, 6B4G, VT52
HW-25-8	25 45Hz	8k Ω	4, 8, 16 Ω	10 ~ 70kHz	0.3 dB	150mA	3.5mA	180H	110H	WE-85 (2.4)	6V6, 6BQ5, 71A 6F6, 7189A
HW-25-5	25 45Hz	5k Ω	4, 8, 16 Ω	10 ~ 70kHz	0.3 dB	200mA	4.0mA	130H	80H	WE-85 (2.4)	2A3, 6B4G, VT52 6A3, 6BM8
HW-15-8	15 50Hz	8k Ω	4, 8, 16 Ω	15 ~ 50kHz	0.35 dB	120mA	5.0mA	120H	85H	WE-66 (1.3)	6V6, 6BQ5, 6BX7, 6F6, 6AC5, 6GW8
HW-15-5	15 50Hz	5k Ω	4, 8, 16 Ω	15 ~ 50kHz	0.35 dB	150mA	5.0mA	75H	60H	WE-66 (1.3)	VT52, 2A3, 6BM8 6B4G, 71A, 6L6(T)
HWC-30-8	30 50Hz	8k Ω	4, 8, 16 Ω	10 ~ 50kHz	0.2 dB	160mA	5.0mA	160H	120H	PL-85B (2.0)	6L6GC, 6BQ5 6F6, 6V6, KT-66
HWC-30-5	30 50Hz	5k Ω	4, 8, 16 Ω	10 ~ 50kHz	0.2 dB	220mA	5.0mA	100H	80H	PL-85B (2.0)	EL-34, 2A3, 6A3, 45 6L6GC, 6B4G, VT52

●Insulation Resistance : More than 100M Ω at DC500V

●Dielectric Withstanding : AC1500V,1min.

Output Transformer				Single (with SG tap)					* Without SG tap	
MODEL	Output (W)	Impedance		Frequency Response (± 2 dB)	Insertion Loss	Primary inductance / DC Current	Maximum DC Current	Size Weight (Kg)	Applications	
		Primary	Secondary							
New * H-40-10S	40 40Hz	10k Ω	4, 8, 16 Ω	35~45kHz	0.3 dB	35H / 100mA	125mA	WE-102 (4.1)	845, VT-4C UV211	
H-30-5S	30 30Hz	5k Ω	4, 8, 16 Ω	25~70kHz	0.3 dB	25H / 80mA	160mA	WE-102 (4.1)	PX-25, UX-50 DA-30/PX-25A	
H-30-3.5S	30 30Hz	3.5k Ω	4, 8, 16 Ω	25~80kHz	0.3 dB	20H / 100mA	200mA	WE-102 (4.1)	300B, PX25 6550A, 6L6GC	
* H-20-14U	20 50Hz	10k Ω / 14k Ω	4, 8, 16 Ω	30~50kHz	0.3 dB	40H / 50mA(10k Ω) 50H / 45mA(14k Ω)	80mA	WE-85 (2.4)	6V6, VT-62/801A, 42 6F6, VT-25/10	
H-20-7U	20 50Hz	5k Ω / 7k Ω	4, 8, 16 Ω	25~70kHz	0.3 dB	23H / 70mA(5k Ω) 30H / 60mA(7k Ω)	100mA	WE-85 (2.4)	6V6, 6L6GC, 6BQ5 6F6, KT-66, VT52, 45	
H-20-3.5U	20 50Hz	2.5k Ω / 3.5k Ω	4, 8, 16 Ω	25~90kHz	0.3 dB	13H / 100mA(2.5k Ω) 18H / 80mA(3.5k Ω)	140mA	WE-85 (2.4)	300B, EL-34, 2A3 6B4G, 6L6GC, 6A3	
H-20-600	20 50Hz	600 Ω	4, 8, 16 Ω	30~100kHz	0.4 dB	2.3H / 300mA	320mA	WE-85 (2.4)	6C33C-B	
H-507S	7 50Hz	5k Ω / 7k Ω	4, 8, 16 Ω	45~100kHz ± 3 dB	0.6 dB	15H / 50mA(5k Ω) 20H / 40mA(7k Ω)	65mA	WE-66 (1.3)	6V6, 6BQ5, 71A 6F6, 7189A, 6AC5	
H-203S	7 50Hz	2.5k Ω / 3.5k Ω	4, 8, 16 Ω	45~100kHz ± 3 dB	0.6 dB	6.5H / 70mA(2.5k Ω) 9H / 60mA(3.5k Ω)	90mA	WE-66 (1.3)	2A3, 6B4G, 6A3,300B 6L6,EL34,PX4,KT88	
New 2 stage amp. H-507D	7 50Hz	5k Ω / 7k Ω	4, 8, 16 Ω	45~100kHz ± 3 dB	0.6 dB	15H / 50mA(5k Ω) 20H / 40mA(7k Ω)	65mA	WE-66 (1.3)	6V6, 6BQ5, 71A 6F6, 7189A, 6AC5	
New 2 stage amp. H-203D	7 50Hz	2.5k Ω / 3.5k Ω	4, 8, 16 Ω	45~100kHz ± 3 dB	0.6 dB	6.5H / 70mA(2.5k Ω) 9H / 60mA(3.5k Ω)	90mA	WE-66 (1.3)	2A3, 6B4G, 6A3,300B 6L6,EL34,PX4,KT88	
HC-507U	20 50Hz	5k Ω / 7k Ω	4, 8, 16 Ω	30~45kHz	0.6 dB	20H / 70mA(5k Ω) 26H / 60mA(7k Ω)	100mA	PL-85B (2.0)	6V6, 6L6GC, 6BQ5 6F6, KT-66, VT52, 45	
HC-203U	20 50Hz	2.5k Ω / 3.5k Ω	4, 8, 16 Ω	30~60kHz	0.6 dB	10H / 100mA(2.5k Ω) 13H / 80mA(3.5k Ω)	130mA	PL-85B (2.0)	300B, EL-34, 2A3 6B4G, 6L6GC, 6A3	

●Insulation Resistance : More than 100M Ω at DC500V

●Dielectric Withstanding : AC1500V,1min.

Input Transformer									
MODEL	Impedance				Frequency Response (- 1dB)	Turns Ratio	Insertion Loss	Maximum Secondary output voltage (0.5% distortion at 30Hz)	Size Weight (Kg)
	Primary	Secondary	Primary	Secondary					
HI-6-47K	600 Ω	Split	47K Ω	Split	10 ~ 20kHz	1 : 8.8	0.4 dB	15V	WE-60 (0.8)
HI-6-10K	600 Ω	Split	10K Ω	Split	10 ~ 50kHz	1 : 4.1	0.4 dB	10V	WE-60 (0.8)

●Insulation Resistance : More than 100M Ω at DC250V

●Dielectric Withstanding : AC250V,1min.

Interstage Driver Transformer			Single / Push Pull				
MODEL	Primary Impedance	Turns Ratio	Frequency Response (± 2 dB)	Primary inductance	Primary DC Currentt Series / Parallel	Size Weight (Kg)	Applications
A-107	7k Ω	1 \times 2 : 2 \times 2	25 ~ 25kHz	70H-10mA 80H-5mA	10mA / 20mA	WE-60 (0.8)	12AU7, 76 6SN7, 5687
A-105	5k Ω	1 \times 2 : 1 \times 2	25 ~ 40kHz	50H-15mA 60H-7mA	15mA / 30mA	WE-60 (0.8)	5687, 6AH4GT 6S4A, 6BQ5(T)

●Insulation Resistance : More than 100M Ω at DC500V ●Dielectric Withstanding : AC1500V,1min.

Interstage Driver Transformer			Single					
MODEL	Primary Impedance	Turns Ratio	Frequency Response (- 2dB)	Primary inductance	Primary DC Currentt	Insertion Loss	Maximum Secondary output voltage	Size Weight (Kg)
New A-305	5k Ω	1 : 1	20 ~ 100kHz (100k Ω Load)	70H-20mA 65H-30mA	30mA	0.6 dB	150V (20Hz, 5K Ω , 30mA)	WE-85 (2.4)
New ☆ A-115	5k Ω	1 : 1	30 ~ 100kHz (50k Ω Load)	60H-10mA 50H-15mA	15mA	0.6 dB	120V (30Hz, 5K Ω , 15mA)	WE-60 (0.8)

☆ : Make On order, without rating plate

●Insulation Resistance : More than 500M Ω at DC1000V

Line Output Transformer			Single / Push Pull					
MODEL	Impedance		Frequency Response (- 2dB)	Insertion Loss	Rated DCCurrent	Maximum DCCurrent	Size Weight (Kg)	
	Primary	Secondary						
HL-20K-6	20k Ω	600 Ω /150 Ω Split	25 ~ 45kHz	0.7 dB	15mA	30mA	WE-60 (0.8)	
HL-10K-6	10k Ω	600 Ω /150 Ω Split	20 ~ 45kHz	0.7 dB	15mA	35mA	WE-60 (0.8)	

●Insulation Resistance : More than 100M Ω at DC500V ●Dielectric Withstanding : AC1500V,1min.

MC Stepup Transformer			For MC Phono Pickup Cartridge					
MODEL	Primary Impedance	Secondary Load Impedance		Stepup Rate/Gain	Frequency Response (- 1dB)	Insertion Loss	Size Weight (Kg)	
		Rated Load Impedance	Recommendation Rated Load Impedance					
HM-3	Primary Series Connection 12 Ω (7~40 Ω)	4.7K Ω	47K Ω	20Times / 26dB	15 ~ 50kHz (Secondary load :4.7K Ω)	1.5 dB	WE-60L (0.5)	
	Primary Parallel Connection 3 Ω (2~7 Ω)	4.7K Ω	47K Ω	40Times / 32dB				
HM-X	Primary Series Connection 12 Ω (7~40 Ω)	2.7K Ω	47K Ω	15Times / 23dB	15 ~ 100kHz (Secondary load :2.7K Ω)	1.5 dB	WE-60L (0.5)	
	Primary Parallel Connection 3 Ω (2~7 Ω)	2.7K Ω	47K Ω	30Times / 29dB				
HM-7 (OFHC Copper Wire, 99.99%)	Primary Series Connection 12 Ω (7~40 Ω)	2.7K Ω	47K Ω	15Times / 23dB	10 ~ 80kHz (Secondary load :2.7K Ω)	2.3 dB	WE-60L (0.5)	
	Primary Parallel Connection 3 Ω (2~7 Ω)	2.7K Ω	47K Ω	30Times / 29dB				

●Insulation Resistance : More than 100M Ω at DC250V ●Dielectric Withstanding : AC250V,1min.

Equalizer Coils			For LCR type Phono Equalizer			
MODEL	Contents	Inductance	Terminal No.	DC resistance	Size Weight (Kg)	
H-EQL	L _L	1.9H	5 - 7	20 Ω	WE-60L (0.4)	
	L _H	45mH	1 - 9	5.5 Ω		

Information in this document is subject to change without notice



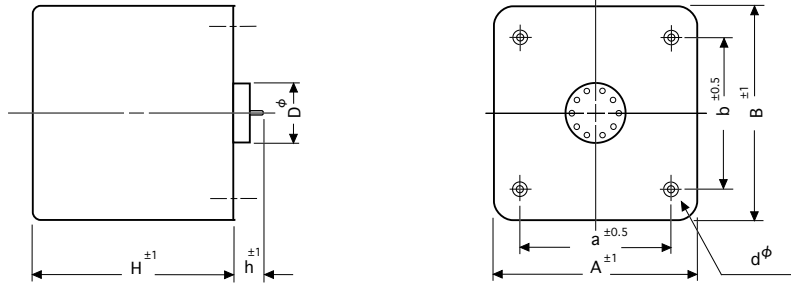
HASHIMOTO ELECTRIC CO., LTD.

Tateishi 2-17-11, Katushika-ku, Tokyo 124-0012, Japan
Tel. 81-3-3691-4173 Fax. 81-3-3691-9416
<http://www.hashimoto-trans.co.jp>

<January, 2021>

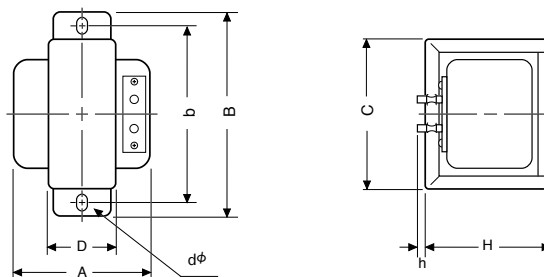
Dimensions

WE Type



Model	Style	Dimensions(mm)										Weight (Kg)
		A	B	a	b	C	D	H	h	d ϕ	D ϕ	
HW-100-5	WE-114	124	136	80	80	—	—	120	15	M4	29	6.2
HW-60-5	WE-102	100	110	80	80	—	—	120	15	M4	29	4.1
HW-40-10	WE-85	80	88	55	60	—	—	110	15	M4	29	2.4
HW-40-8	WE-85	80	88	55	60	—	—	110	15	M4	29	2.4
HW-40-5	WE-85	80	88	55	60	—	—	110	15	M4	29	2.4
HW-25-8	WE-85	80	88	55	60	—	—	110	15	M4	29	2.4
HW-25-5	WE-85	80	88	55	60	—	—	110	15	M4	29	2.4
HW-15-8	WE-66	66	66	40	40	—	—	85	15	M3	29	1.3
HW-15-5	WE-66	66	66	40	40	—	—	85	15	M3	29	1.3
H-40-10S	WE-102	100	110	80	80	—	—	120	15	M4	29	4.1
H-30-5S	WE-102	100	110	80	80	—	—	120	15	M4	29	4.1
H-30-3.5S	WE-102	100	110	80	80	—	—	120	15	M4	29	4.1
H-20-14U	WE-85	80	88	55	60	—	—	110	15	M4	29	2.4
H-20-7U	WE-85	80	88	55	60	—	—	110	15	M4	29	2.4
H-20-3.5U	WE-85	80	88	55	60	—	—	110	15	M4	29	2.4
H-20-600	WE-85	80	88	55	60	—	—	110	15	M4	29	2.4
H-507S	WE-66	66	66	40	40	—	—	85	15	M3	29	1.3
H-203S	WE-66	66	66	40	40	—	—	85	15	M3	29	1.3
H-507D	WE-66	66	66	40	40	—	—	85	15	M3	29	1.3
H-203D	WE-66	66	66	40	40	—	—	85	15	M3	29	1.3
A-107	WE-60	58	52	40	40	—	—	85	15	M3	29	0.8
A-105	WE-60	58	52	40	40	—	—	85	15	M3	29	0.8
A-305	WE-85	80	88	55	60	—	—	110	15	M4	29	2.4
A-115	WE-60	58	52	40	40	—	—	85	15	M3	29	0.8
HL-20K-6	WE-60	58	52	40	40	—	—	85	15	M3	29	0.8
HL-10K-6	WE-60	58	52	40	40	—	—	85	15	M3	29	0.8
HI-6-47K	WE-60	58	52	40	40	—	—	85	15	M3	29	0.8
HI-6-10K	WE-60	58	52	40	40	—	—	85	15	M3	29	0.8
HM-3	WE-60L	58	52	40	40	—	—	55	15	M3	29	0.5
HM-X	WE-60L	58	52	40	40	—	—	55	15	M3	29	0.5
HM-7	WE-60L	58	52	40	40	—	—	55	15	M3	29	0.5
H-EQL	WE-60L	58	52	40	40	—	—	55	15	M3	29	0.4
C-16-150W	WE-85	80	88	55	60	—	—	110	15	M4	29	3.0
C-10-200W	WE-85	80	88	55	60	—	—	110	15	M4	29	3.0
C-6-250W	WE-85	80	88	55	60	—	—	110	15	M4	29	3.0
C-25-150CH	WE-85	80	88	55	60	—	—	110	15	M4	29	2.4
C-15-200CH	WE-85	80	88	55	60	—	—	110	15	M4	29	2.4
C-60-50W	WE-66	66	66	40	40	—	—	85	15	M3	29	1.3
C-30-80W	WE-66	66	66	40	40	—	—	85	15	M3	29	1.3
C-10-130W	WE-66	66	66	40	40	—	—	85	15	M3	29	1.3
C-50-30	WE-60	58	52	40	40	—	—	85	15	M3	29	0.85

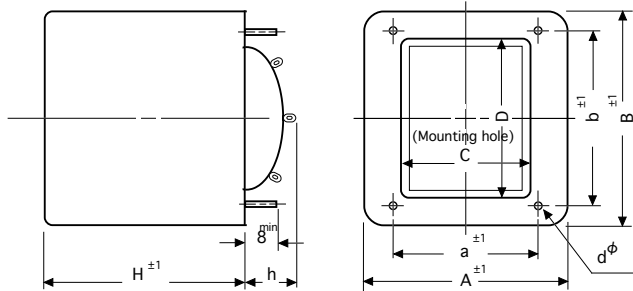
CB Type



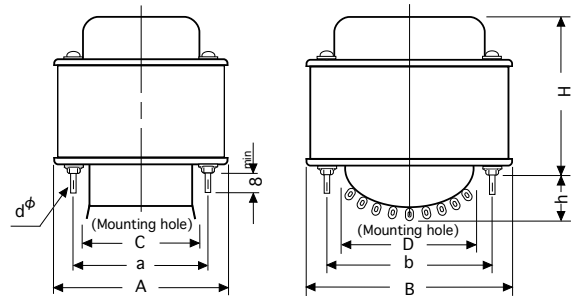
Model	Style	Dimensions(mm)										Weight (Kg)
		A	B	a	b	C	D	H	h	d ϕ		
C -1 -400	CB - 66	63	90	—	80	71	32	60	3	4.5X6.5	0.85	
C -30 -40	CB - 60	62	86	—	75	62	33	54	3	4.5X6.5	0.7	

Dimensions

WEPT Type

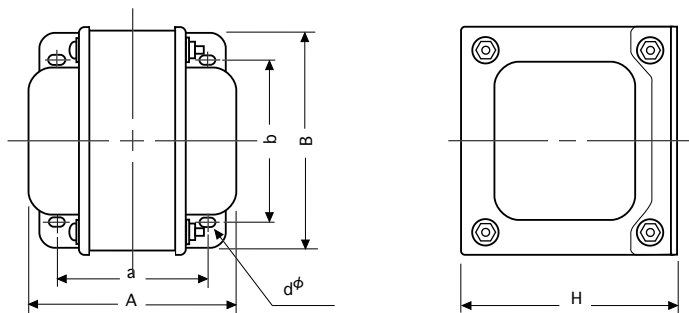


PB Type



Model	Style	Dimensions(mm)									Weight (Kg)
		A	B	a	b	C	D	H	h	d ϕ	
PT-400B	WEPT-114	124	136	76	95	65	83	120	25	M 4	8.1
PT-310B	PB-114	100	120	76	95	65	83	110	32	M 4	5.9
PT-300B	PB-114	100	120	76	95	65	83	110	32	M 4	5.9
PT-270	PB-114	100	120	76	95	65	83	110	32	M 4	5.8
PT-260	PB-114	100	120	76	95	65	83	110	32	M 4	5.7
PT-250	PB-114	100	120	76	95	65	83	110	32	M 4	5.7
PT-240	PB-114	100	120	76	95	65	83	110	32	M 4	5.7
PT-220	PB-114	100	120	76	95	65	83	100	32	M 4	5.2
PT-180	PB-102	93	107	70	87	60	81	95	32	M 4	4.3
PT-165	PB-102	93	107	70	87	60	81	85	32	M 4	3.9
PT-160	PB-102	93	107	70	87	60	81	85	32	M 4	3.9
PT-150	PB-102	93	107	70	87	60	81	85	32	M 4	3.9
PT-100	PB-95	86	100	65	80	56	71	73	32	M 4	2.8
PT-95	PB-95	86	100	65	80	56	71	73	32	M 4	2.8
PT-60	PB-78	70	83	54	66	48	57	69	28	M 4	1.7

PH / PL Type



Model	Style	Dimensions(mm)									Weight (Kg)
		A	B	a	b	C	D	H	h	d ϕ	
HC -507U	PL - 85B	90	90	65	74	—	—	83	—	4.5X7.5	2.0
HC -203U	PL - 85B	90	90	65	74	—	—	83	—	4.5X7.5	2.0
HWC-30-8	PL - 85B	90	90	65	74	—	—	83	—	4.5X7.5	2.0
HWC-30-5	PL - 85B	90	90	65	74	—	—	83	—	4.5X7.5	2.0
CC-10-200W	PH -78	86	70	65	52	—	—	83	—	4.5X7	1.8